

EVIO Labs Medford (pka Kenevir Research)
 540 East Vilas Road, Suite F, Central Point, OR 97502
 541-668-7444 / OLCC 010-1001626980D / www.EVIOLabs.com

25 MG Bath Bomb



Matrix: Other

METRC Batch #:

Sampling Method/SOP: SOP.T.20.010

Date Sampled: 05/22/19 09:00

Date Accepted: 05/22/19

Harvest/Process Lot ID:

Batch ID:

Batch Size (g):

Unit for Sale:

Harvest/Production Date:

Cannabinoid Analysis

FOR INFORMATIONAL USE ONLY - NOT FOR REGULATORY PURPOSES

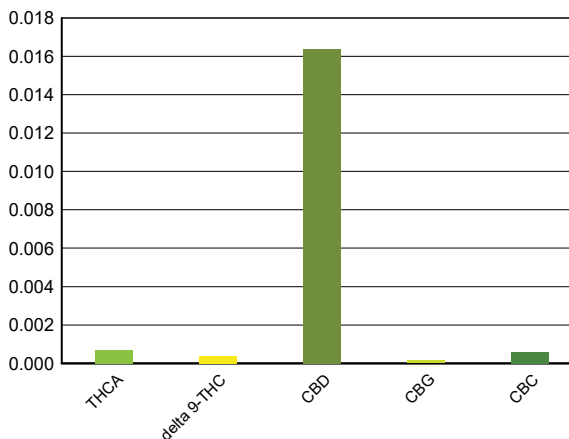
Date/Time Extracted: 05/24/19 10:30

Analysis Method/SOP: SOP.T.40.020

Date/Time Analyzed: 05/29/19 13:22

Cannabinoids	LOQ(%)	mg/g	% weight	Cannabinoid Profile
Total THC <small>((THCA*0.877)+Δ9THC)</small>		< LOQ	< LOQ	
Total CBD <small>((CBDA*0.877)+CBD)</small>		0.164	0.0164	

THCA	0.0100	< LOQ	< LOQ
delta 9-THC	0.0100	< LOQ	< LOQ
delta 8-THC	0.0100	< LOQ	< LOQ
CBDA	0.0100	< LOQ	< LOQ
CBD	0.0100	0.164	0.0164
CBN	0.0100	< LOQ	< LOQ
CBG	0.0100	< LOQ	< LOQ
CBC	0.0100	< LOQ	< LOQ
Sum of tested Cannabinoids	0.0100	0.182	0.0182



"Total THC" and "Total CBD" are calculated values and are an Oregon reporting requirement (OAR 333-064-0100). For Cannabinoid analysis, only delta 9-THC, THCA, CBD, CBDA are ORELAP accredited analytes. Cannabinoid values reported for plant matter are dry weight corrected; Oregon Water Activity action level is 0.65Aw and Oregon Moisture Content action level is 15%. Samples above limit will be highlighted RED; FD = Field Duplicate; LOQ = Limit of Quantitation.

Ian Riversong
 Laboratory Director - 6/3/2019

EVIO Labs Medford (pka Kenevir Research)
540 East Vilas Road, Suite F, Central Point, OR 97502
541-668-7444 / OLCC 010-1001626980D / www.EVIOLabs.com

Quality Control

Batch: M19E119 - SOP.T.30.050 Prep for Cannabinoids

Blank(M19E119-BLK1)			Extracted: 05/24/19 10:30		Analyzed: 05/24/19 18:51		
Analyte	Result	LOQ	Recovery Limits	Analyte	Result	LOQ	Recovery Limits
THCA	< LOQ	0.0100 (%)	< LOQ	delta 9-THC	< LOQ	0.0100 (%)	< LOQ
delta 8-THC	< LOQ	0.0100 (%)	< LOQ	CBDA	< LOQ	0.0100 (%)	< LOQ
CBD	< LOQ	0.0100 (%)	< LOQ	CBG	< LOQ	0.0100 (%)	< LOQ
CBN	< LOQ	0.0100 (%)	< LOQ	CBC	< LOQ	0.0100 (%)	< LOQ
Sum of tested Cannabinoid:	< LOQ	0.0100 (%)	< LOQ				

LCS(M19E119-BS1)			Extracted: 05/24/19 10:30		Analyzed: 05/29/19 11:11		
Analyte	% Recovery	LOQ	Recovery Limits	Analyte	% Recovery	LOQ	Recovery Limits
THCA	92.4	(%)	70-130	delta 9-THC	128	(%)	70-130
CBDA	90.3	(%)	70-130	CBD	89.0	(%)	70-130



Ian Riversong
Laboratory Director - 6/3/2019